



Gloucestershire
Cricket Foundation

Club Connect: Building the Future

DIVERSIFY YOUR CRICKET
OFFERING

9TH FEBRUARY 2026

All Stars & Dynamos Cricket - Introduction



Chris Munden - GCF
Operations Manager



Gloucestershire
Cricket Foundation

GRACE campaign

- In Gloucestershire, the game is growing:
- 71 Women's & girls clubs!
- 26,498 children playing in schools!
- 2,119 hours spent in community programmes!
- 30 SEND schools!
- More volunteers being upskilled!
- These stats speak for themselves and show that Cricket truly is a game for everyone.



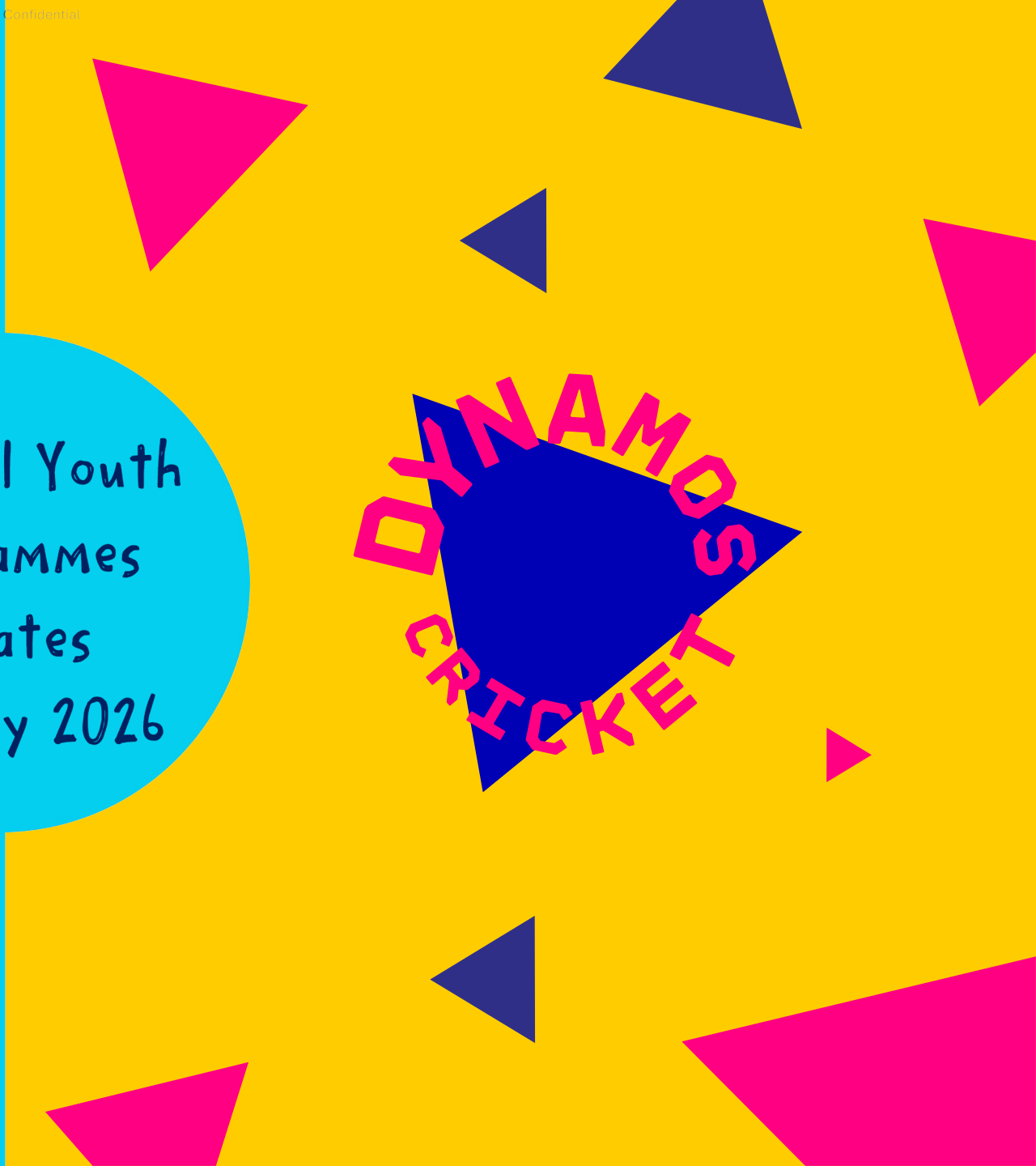


Gloucestershire
Cricket Foundation

**All Stars &
Dynamos Cricket**



National Youth
Programmes
Updates
January 2026





MARKETING NEWS

Social Media Webinar for Clubs

★ Back by popular demand ★

6pm Tuesday 24th Feb

[Teams link](#)

New Club - led Priority Window

1st - 11th March

Guidance and template
messaging provided to clubs



2026 Launch Dates

Clubspark system now open for 2026 Checklists to be completed and Programmes to be created

29th Jan:
Club Kick-Off
Virtual Meeting

1st – 11th Mar:
Club-Led Priority
Window

19th Mar:
National
Launch

8th May:
Club Delivery
Commences



February:
Club Administration, Programme
Set-Up & Activator Compliance
RCBs Approve

12th – 18th Mar:
National Priority
Window



Digital Update

Zac's Big Digital To-Do List

- ✓ Improve booking journey
- ✓ Org checklist reset
- ✓ Activator journey reset
- ✓ CC Programme Exports
- ✓ Capacity default changed
- ✓ Set up RCB training/support
- ✓ Extra Tools for helpdesk
- ✓ Looker studio reporting
- ⌚ Control centre updates
 - More exports
 - Girls only filter
 - Other filters
- ⌚ Launch NYP e-learning
- ⌚ Consent lists



NEW PRODUCTS



- New Branded Products appearing on Online Shop
- Updated Design to National Youth Programmes Mailing Bags



- As a **Thank You** for Contributing to a Record-Breaking Year, every club that has delivered in 2025 will be offered the chance to claim up to 2 x All Stars Wicket Keepers and 2 x Dynamos Pop-Up Goals





ONLINE STORE ORDERS

- All Store Credits have been reset to £0.00
- 2026 Credits will be automatically added to Online Store Account when the following steps have been completed:
 - Organisation Checklist (Approved)
 - ASC/DC Course is Set Up in ClubSpark
 - Reached a min. of 10 Participant Registrations
- Once surpassed 10 Registrations, £5 per participant will be added to Online Store Account for you to spend





PARTICIPANT PACKS

- **New Participant Packs** – Same as 2025
- **Returner Participant Packs** – Bat is removed*
**Only included in 2025 due to lack of equipment in 2024*
- **Dynamos Participant** – NB T-Shirt & Topps Cards
- **Dynamos Intros Bat & Ball Packs** – No longer available
- **Centre Kits & Banners for NEW Centres** – Centre kit and, optional, banner set will be added to their basket





Walking Cricket - Introductions



Josh Graves – GCF Community
Development Officer



Gloucestershire
Cricket Foundation



Gloucestershire
Cricket Foundation

Walking Cricket

GROWING INCLUSIVE CRICKET
OPPORTUNITIES FOR ALL AGES
AND ABILITIES

What is Walking Cricket?

A slower-paced, low-impact version of cricket suitable for adults, especially 50+.

- Encourages everyone to participate, regardless of previous cricket experience.
- Key features:
- Underarm bowling only
- Walking only, no running
- Soft ball and lightweight bats for safety
- Focus on fun, fitness, and social interaction



Gloucestershire
Cricket Foundation

How it works

- Matches are played at a walking pace meaning no running allowed
- Batters bat in pairs and rotate positions
- Fielders and bowlers follow simple, easy-to-learn rules
- Soft ball and plastic bats make it safe and accessible for everyone
- Sessions typically last around one hour
- Designed for fun, fitness, and social interaction.



Gloucestershire
Cricket Foundation

What We Want From Clubs

- A host venue - weekly or fortnightly sessions indoors or outdoors
- A key volunteer / facilitator to help welcome players
- Promotion through club channels (newsletter, social media, noticeboards)
- Light facilitation - helping set up, scoring, making tea, etc.
- Willingness to trial – start with a 6-8 week pilot



Gloucestershire
Cricket Foundation

What are the Benefits for the Participants?

Physical

Gentle exercise improves strength, balance, and coordination

Low-impact format reduces risk of injury

Mental

Boosts confidence and wellbeing

Helps reduce stress and promotes a positive mood

Social

Meet new people and make friends

Encourages community involvement and teamwork

“It’s a really good way of meeting new people and remain being active. There is a good atmosphere and it’s a great way of playing sport in a friendly group”



Gloucestershire
Cricket Foundation

What are the Benefits for the Club?

- Brings new people into the club
- Strengthens the club's role in its community
- Increases daytime and off-season use of facilities
- Helps meet health, wellbeing & social isolation outcomes
- Provides new volunteers and supporters
- Aligns with ECB priorities around inclusion & lifelong participation
- Potential to increase club membership



Gloucestershire
Cricket Foundation

What We Provide to Clubs

- Support with Funding Applications
- Promotional Support
- Facilitation Guidance
- Assistance to Build Sustainability
- Regular check-ins.
- Help establishing volunteers, embedding the offer in the club, and linking with community groups to keep numbers growing
- Potential for a Competition Pathway



Gloucestershire
Cricket Foundation

What our participants say

"Sessions are thoroughly enjoyable, always well organised, and the ambassadors do a brilliant job."

"I really enjoy the cricket, and the social side over coffee afterwards is an added bonus."

"I have benefitted from attending, and I can see how much people's confidence and skills have improved."

"Only recently joined, but I'm really enjoying the sessions and meeting other players."

"I look forward to the weekly sessions; they are friendly, welcoming, and well run."



Gloucestershire
Cricket Foundation

Get Involved



Josh Graves

Josh.graves@gloucestershirecricketfoundation.org

07534542748



Gloucestershire
Cricket Foundation

Disability Cricket - Introductions



Jeanette Tate - GCF Disability Development Officer



Gloucestershire
Cricket Foundation



Gloucestershire
Cricket Foundation

**Disability
Champion Cricket
Clubs**

Disability Cricket Champion Clubs (DCCC's)

Provide sessions for players with a disability to play cricket either by:

- Support Super 1's (community programme) by providing a venue during the summer.
- Support County teams by providing a venue for matches and/or training .
- Deliver 6 weeks (or more) of sessions for disabled players.
- Provide opportunities for disabled players to play table cricket.



Gloucestershire
Cricket Foundation

Benefits

- Support an amazing group of individuals to play cricket in an inclusive and welcoming environment.
- Eligible for ECB funding.
- Opportunities for additional training for coaches and volunteers.
- In your first year, you can get a kit bag!



Case study - Frenchay Cricket Club

Frenchay Falcons are a Super 1's group which hold weekly sessions at Frenchay Cricket Club.

"Frenchay is both proud and very grateful to be recognised as a Champion Club for our Falcons Disability Cricket Group. We have run Falcons Cricket for a considerable time now, and the challenges have traditionally been to find suitable Coaches, Volunteers, and to source sufficient funding to run 'free to attend' sessions. As a Champion Club, we have access to great training opportunities for volunteers including older Falcons Players, together with the prospect of very welcome finance, which allows us to promote more sessions, importantly including Summer Holiday Camps."

Jim Donaldson



FRENCHAY
CRICKET CLUB
~1846~



Gloucestershire
Cricket Foundation

Case study - Andre's Mum

"Andre is a placid young man who plays several sporting activities; however, his favourite sport is cricket. Andre has been a member of Frenchay Falcons since his early teens where he spoke very little, if at all.

Over the years Andre's confidence has grown tremendously, he has been able to complete the various courses, such as umpiring, grounds keeping and scoring. His greatest achievement so far, has proven to be his ability to grow in confidence, to use his voice constructively on the pitch working effectively as part of a winning team.

It is felt that Frenchay Falcons has played a great part in his development as a player and as an individual who can confidently speak up representing himself and his team"



Gloucestershire
Cricket Foundation

Case study - Stroud CC

"Being a Disability Champion Cricket Club for the past 4 or 5 years has been an important part of Stroud CC's drive to be an inclusive community led club dedicated to spreading the enjoyment of cricket as wide as possible. On a personal level I have found the opportunity to work alongside the Jeanette, Becky, and other members of the superb GCF coaching team inspirational. Witnessing the skills and enthusiasm of the Super 1s has been great, and having one of the squad Shrav Philpott join our Women's team and our Saturday 4th XI was the absolute icing on the cake."

James Wigley



Shrav Philpott



Gloucestershire
Cricket Foundation

Case study - Jack's dad

- *"Super 1's provides a wonderful release away from daily commitments and expectations for Jack. It's a time and space where he can relax and be himself amongst others in an amazing, supportive and warm crowd. Spending time out on the cricket field and in the fresh air provides an equal welcome away from screens and being immersed in the activity of a club scene. Jack always responds so well to being active, and activated, by fresh air and belonging, and carries a smile when he leaves. It is always a good watch for a parent of a SEN child"*



Gloucestershire
Cricket Foundation

Case study - Cirencester Cricket Club

Cirencester Cricket Club ran a 6 weeks of sessions for children with additional needs

"Running the disability sessions for us was inspiring and rewarding to engage children into cricket, no matter what their backgrounds were as participants. At first, they were anxious as they had not played much cricket, but after the 6 week programme they had created new friends, gained confidence with coaches. This meant that the club were able to integrate those players into mainstream hardball sessions with other players. It was delightful to be able to see new players develop and blossom and for them to be able to have a cricket environment they feel welcomed and comfortable at"

Kiera Woodcock



Gloucestershire
Cricket Foundation

Case study - Quedegley and Hardwicke CC

*"The benefits **our club** has seen this season from being a Disability Champion Club are:*

- 1. We have gained some new players. Players who were playing disability matches at the club enjoyed the vibe and interacting with club members so much, we had 2 players join our club.*
- 2. It has been good for the club to be able to advertise on our website and social media that we are a Disability Champion Club.*
- 3. Revenue. Not only have we received the £500 for becoming a Disability Champion Club, but we also provided teas and refreshments at Disability Matches throughout the season which brought in additional revenue.*
- 4. Training and Equipment. The training equipment we received was used throughout the summer at our youth training sessions. The training available has helped club members understand the difficulties faced by disabled cricketers at our venue.*
- 5. A chance to interact with our club players make friendships because they played all their matches at the same venue."*



Case study - Quedegley and Hardwicke CC

*"The benefits that **the players** have received due to our club being a Disability Champion Club:*

- 1. A place to call home.
- 2. The fact the club has 6 changing rooms with toilets removed any issues of mixed gender teams.
- 3. A large car park and good wheelchair access to both the ground and pavilion.
- 4. A modern pavilion that was built with consideration for disability access with good facilities.
- 5. A chance to interact with our club players make friendships because they played all their matches at the same venue."



Gloucestershire
Cricket Foundation

Case study - Liara

“When I first started playing cricket, my hearing loss meant I lacked confidence and often doubted myself. Playing Super 1’s and county disability cricket changed that completely. Competing at higher levels, training in the Disability Premier League, and becoming a Lords Taverners Youth Ambassador helped me grow in belief and self-confidence. That confidence now comes back with me to club cricket, where I feel more assured and more vocal”



Gloucestershire
Cricket Foundation

Frequently asked questions (FAQ's)

Does a coach need specialist training?

No, all coaches adapt when coaching already, so just requires additional adaptations.

As a club, how many players would we expect at a disability cricket session?

Group size is generally low; they are generally around 2-16 in size.



Gloucestershire
Cricket Foundation

How to get involved

- Offer to support a Super 1's hub.
- Offer to support an adult community hub.
- Offer your club for County matches.
- Offer to support festivals during the summer for disabled young people.
- Contact Jeanette Tate:
- Jeanette.tate@gloucestershriecricketfoundation.org



Gloucestershire
Cricket Foundation

Women's & Girls' Cricket - Introductions



Charlotte Moore - GCF Women & Girls Development Manager



Tessa Whieldon - ECB Senior Manager - Women's & Girls' Participation and Growth



Gloucestershire
Cricket Foundation



TESSA WHIELDON

ECB SENIOR MANAGER:
WOMEN'S & GIRLS'
PARTICIPATION

INSPIRE PILLAR: “AN UNMISSABLE EVENT THAT FOREVER CAPTURES HEARTS AND MINDS”

PLAYING

500,000 women & girls
playing cricket

Schools Cricket Day
Watch Parties

Activations in host venues &
cities

LEADING

300 Female Leaders

Leading the Future of
Women's Cricket **Conference**

Female Leaders in **Clubs**

VOLUNTEERING

500 Champions of
Change

Train Young People
Educate Clubs

ENABLERS

SCHOOLS, FACILITIES, CRICKET CITIES, CLUB DEVELOPMENT, ROLE MODELS, NATIONAL YOUTH PROGRAMMES, LEAGUE DEVELOPMENT...

Schools **CRICKET** Day

WHAT

- 23rd April 2026 (50 days to go)
- For all schools, whether teacher led, volunteer led or Cricket Board led
- Assembly video & cross-curricular resources
- 1,000+ schools expressed an interest

WHY

- Showing how accessible cricket can be
- How easy it can be to run a PE session
- Educate more teachers and pupils
- Leave a legacy of school-club links





cinch

GM

GM

Watch parties

WHAT

- Clubs & community organisations host Watch Parties during the tournament (12 June to 5 July)
- Venue packs & digital resources
- Aim: 1,000 organisation
 - Registration opens **4 March**

WHY

- Making women's and girls' cricket more visibility
- Elevating the prominence of women's and girls' cricket
- Continue to change culture and perception





BRING YOUR SCHOOL TO THE ICC WOMEN'S T20 WORLD CUP 2026

Be a part of the unmissable action with your school,
£2 tickets for all pupils and teachers to the below matches

LEEDS

10:30 Wednesday 17 June 2026

Australia vs Qualifier
India vs Qualifier

BIRMINGHAM

18:30 Wednesday 17 June 2026

South Africa vs Pakistan

SOUTHAMPTON

18:30 Friday 19 June 2026

New Zealand vs Qualifier

BRISTOL

10:30 Tuesday 23 June 2026

New Zealand vs Qualifier
Sri Lanka vs Qualifier

MANCHESTER

14:30 Thursday 25 June 2026

India vs Qualifier

Secure your seats, book on the school ticket link



WOMENS.T20WORLD CUP.COM/SCHOOLGROUP



BRING YOUR CLUB TO THE ICC WOMEN'S T20 WORLD CUP 2026

Buy **10 tickets** and get **2 free** if you buy
between **4 March** and **23 May 2026**

Book using the club group booking link
WOMENS.T20WORLD CUP.COM/CLUBGROUP

For group bookings of up to 10 please book online at
WOMENS.T20WORLD CUP.COM

Under 16s tickets from **£5**
Adults tickets from **£15**

Book now to secure your seats. **Scan here** for more information





IN GROUPS...

- Discuss how clubs can take advantage of Schools Cricket Day & Watch Parties to grow the number of girls participating?
- Write two questions you'd like to ask the other groups and / or GCF?

HEADLINES...

Day One: Leading Self and Leading Others

- Leadership & Governance
- Growing Conscious Leadership
- Evolution of Women's Cricket Leagues
- Growing Girls Cricket at Your Club
- Creating Belonging
- The Power of Female Role Models in Sport
- Preparing To Play, Going To Ground, Standing Up To Spin, Maximising Nets & Confidence & Connection

Day Two: Leading Culture and Leading Change

- Growing the Game for All Women
- Seeing is Believing
- Navigating Change as a Leader
- Pathways and Career Progression in the Game
- Promotion and Fundraising in a World Cup Year

Ask the Doctors

**ICC WT20WC
CELEBRATION
EVENING**

— THE **METRO** BANK —
GIRLS
IN CRICKET FUND

**LEADING THE FUTURE
OF WOMEN'S CRICKET**

7th & 8th MARCH 2026

EAST MIDLANDS CONFERENCE CENTRE
UNIVERSITY OF NOTTINGHAM

BOOK YOUR TICKET



KEYNOTE SPEAKERS



SARA DAVIES

Sara Davies MBE is the founder of Crafter's Companion, one of the UK's leading craft brands. She established the company while studying for a Business Management degree at the University of York. During a placement with a small craft company, Sara identified a gap in the market for a tool that could create bespoke envelopes for handmade cards.

With help from her retired engineer father, she designed and launched a ground-breaking product called The Enveloper. After securing a slot on TV shopping channel Ideal World, the product became an instant hit, selling 1,500 units in the first ten minutes and 30,000 within six months of its initial demonstration.



NICOLA LOFTHOUSE

Wing Commander Nicola Lofthouse is a Royal Air Force Pilot, and is the first female Commanding Officer of 99 Squadron at RAF Brize Norton, operating the C17 aircraft – the largest front-line Squadron in the Royal Air Force.

By the age of 25 she was qualified as an Air-to-Air refuelling aircraft Captain, responsible for leading multi-aircraft formations around the world and commanded numerous operational deployments, including Iraq, Afghanistan, Libya, and the Falkland Islands. In addition to flying appointments, Nicola has undertaken roles in RAF PR and strategic communications, and was the Project Manager for a multi-billion pound Project, accelerating aircraft Capabilities into to service.



KATE RICHARDSON-WALSH

Kate Richardson-Walsh, is the most capped female hockey player in her country's history, and was captain of the GB and England women's hockey teams for 13 years.

An inspirational and charismatic leader she has been widely credited for helping build the incredible team ethos and commitment that drove the GB team to a nail biting victory at the Rio Olympic Games.

In winning gold Kate also made history in other ways, becoming one half of the first same-sex married couple to win an Olympic medal playing in the same team.

Having retired from international hockey after Rio,





Gloucestershire
Cricket Foundation

**Please return to
the lecture
theatre for the
final part of the
evening, starting
at 8:40pm.**