



FACILITIES & FUNDING WORKSHOP





AMBITIONS OF THIS WORKSHOP

- CREATE A WELCOMING ENVIRONMENT
- GET YOU THINKING ABOUT YOUR CLUB'S NEEDS
- COUNTY GRANT FUND
- UES
- SUSTAINABILITY FUND
- RAISING MONEY, SAVING MONEY - UTILITRACK
- FUNDING OPPORTUNITIES





CREATING WELCOMING ENVIRONMENTS

TASK (2x2 MINS)

**WHAT DOES THE TERM
WELCOMING ENVIRONMENT
MEAN TO YOU? RELATE THIS TO
YOUR CLUB**





TASK (2x2 MINS)
IF YOU WERE GIVEN £15K FOR
FACILITY DEVELOPMENTS AT
YOUR CLUB, WHAT WOULD YOU
DO WITH IT?

TASK (2x2 MINS)
IF YOU WERE GIVEN £50K FOR
FACILITY DEVELOPMENTS AT
YOUR CLUB, WHAT WOULD YOU
DO WITH IT?



County Grant Funding Stack to date

85

GLOUCESTERSHIRE
CLUBS TO BENEFIT
(56)

£836K

GRANTS AWARDED

£1.5M

OVERALL PROJECT COSTS

£309K

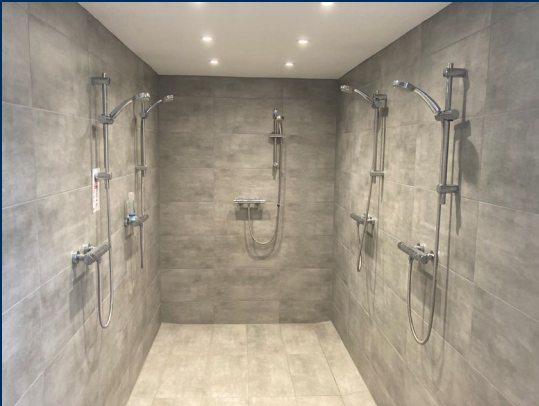
Creating Welcoming
Environments

£298K

Enhanced Facilities
Women & Girls /
Disabled

£229K

Tackling Climate
Change



COUNTY GRANTS FUND 2026

GUIDANCE NOTES
FOR CRICKET CLUBS



COUNTY GRANT FUND 2026-2028 WOMEN'S & GIRLS' FOCUS

- Creating Welcoming Environments
- Enhanced Playing Facilities
- Enhanced Changing Facilities (NEW)
- ~~Tackling Climate Change~~

GRANTS

- £1k to £15k
- For larger-scale Enhanced Changing Facilities, grants up to £50,000 will be available. These projects will be required to meet Sport England's Accessible and Inclusive Sports Facilities Design Guidance

ELIGIBILITY HAS CHANGED

CLUBS MUST DELIVER FOR AT LEAST ONE OF THE FOLLOWING GROUPS:

- **WOMEN'S CRICKET** – Minimum of one team playing at least three soft ball or hard ball fixtures in league/friendly, indoor or outdoor cricket, across 2025/2026 that is recorded on Play-Cricket.com.
- **GIRLS' CRICKET** – Minimum of one team playing at least three soft ball or hard ball fixtures in league/friendly, indoor or outdoor cricket, across 2025/2026 that is recorded on Play-Cricket.com.
- **GIRLS' ONLY DYNAMOS CRICKET** – Clubs delivering a programme for girls in 2025/2026 as registered on ClubSpark.
- **DYNAMOS CRICKET FOR GIRLS' ACTIVATION CLUBS** – Chosen by GCF to deliver across winter to support the formation of a team for 2026.
- **DISABILITY CRICKET** – A registered Disability Champion Club

LOCAL LOGISTICS

- **NATIONAL LAUNCH 5TH FEBRUARY**
- **LAUNCH ON TUESDAY, 24TH FEBRUARY**
- **CLOSING DATE SUNDAY, 15TH MARCH**



W&G Club Survey – 1,150 respondents



40%

UNSATISFIED
WITH EXTERNAL
LIGHTING
AND SAFE ACCESS

**MOST IMPORTANT FOR
EXPERIENCE**
IMPROVING
CHANGING ROOMS AND
SANITARY PROVISION

ACCESS TO QUALITY
PLAYING AND
TRAINING
FACILITIES
IDENTIFIED AS
**MOST
IMPORTANT
FOR
GROWTH**



70%

SAID ONLY
COMMUNAL
SHOWERS
AVAILABLE



40%
NO BABYCHANGING
FACILITIES



67%
UNSATISFIED WITH
VIEWING
EXPERIENCE



57%

UNSATISFIED WITH TOILET
PROVISION IN THEIR CLUB



All your building services
under one roof.

Mechanical • Electrical • Renewables
Fit Out • Maintenance



Darren Cole
Project Manager

Who is UES?



- **Founded in 1986, with 40 years of experience**
- **All modern aspects of Building Services – Mechanical, Electrical, Renewables, Fit outs and Maintenance**
- **Commercial and industrial sectors, including Sports, Transport, Manufacturing, Offices, Healthcare, and Education**
- **Accreditations include Safe Contractor, CHAS Elite, MCS, and B-Corp**
- **Certifications include Gas Safe, OFTEC. F-Gas, NICEIC**



Solar PV

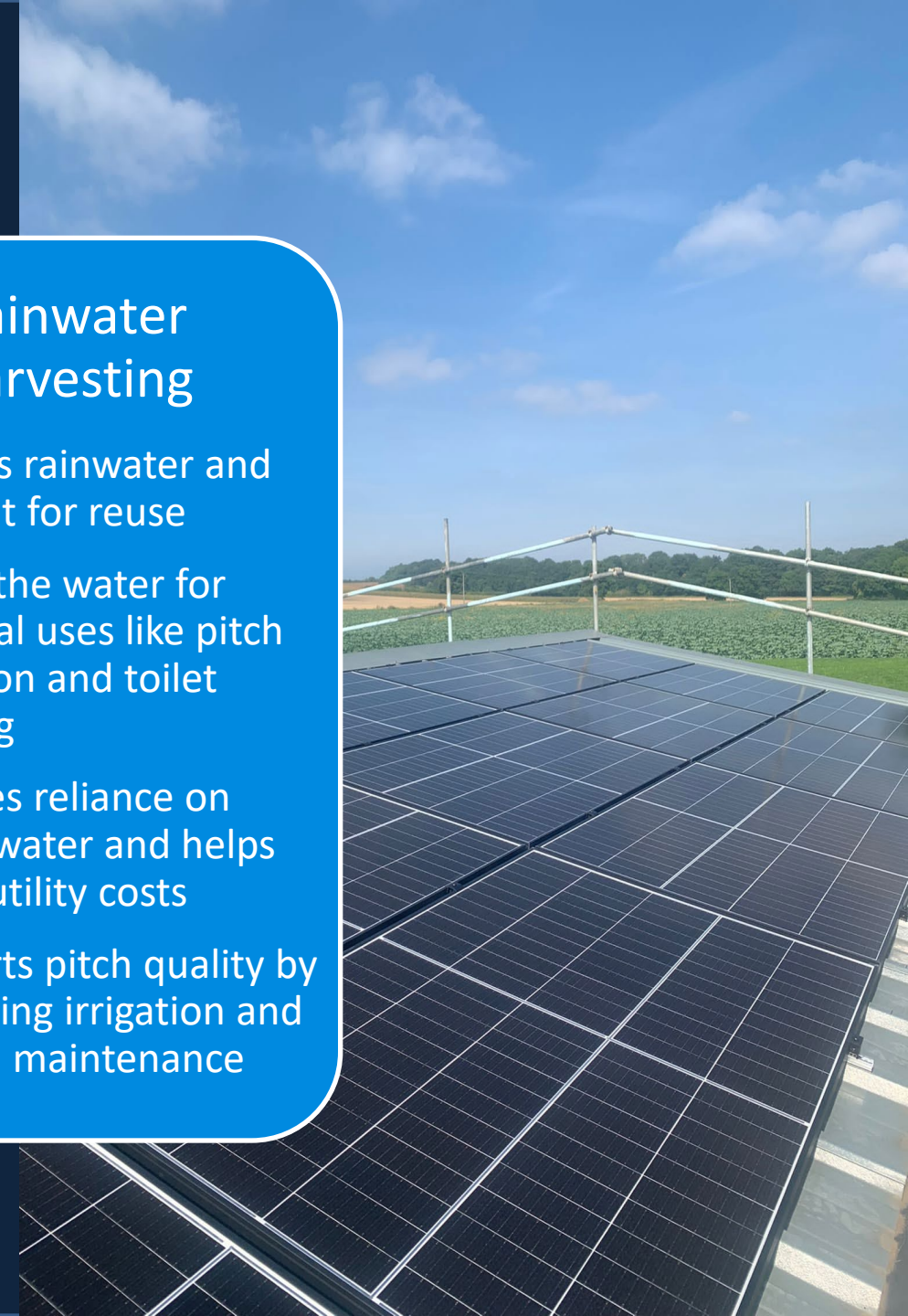
- Reduces your club's carbon footprint
- Cuts electricity bills and boosts savings
- Helps protect against rising energy costs
- Adds long-term value to your facilities
- Makes the most of unused roof space
- Often delivers a strong payback period
- Provides long-term savings and performance

Changing Room Fit-out

- Improves inclusivity and accessibility for all users
- Creates welcoming, community-led spaces
- Maximises space and improves day-to-day usability
- Supports participation, retention, and long-term club growth

Rainwater Harvesting

- Collects rainwater and stores it for reuse
- Filters the water for practical uses like pitch irrigation and toilet flushing
- Reduces reliance on mains water and helps lower utility costs
- Supports pitch quality by improving irrigation and ground maintenance



Thornbury CC

Changing Room Fit out & Solar PV Installation

Solar PV

- 30-Panel Solar PV System, generating around 7,306kWh annually
- Yearly CO2 reduction of 1,551 Kg on estimate
- Expected payback period of 6 years

Changing Room Fit Out

- Inclusive & Accessible unisex changing rooms
- Maximised the changing space for improved experience



Hatherley & Reddings CC

Solar PV Installation

- 20-Panel Solar PV System, generating around 7,702kWh annually
- Yearly CO2 reduction of 1,635 Kg on estimate
- Estimated annual bill reduction in the first year was £3,149





**ECB SUSTAINABILITY FUND
COMING SOON!**

SUES



**HAWKINS GROUND CARE
01453 543847**



KEVAL GAMI
COMMERCIAL ENERGY
SPECIALIST



As one of the UK's leading Independent consultants
We help Cricket Clubs spend less

Consultancy approach – no hard sell

We work with all of the leading suppliers, plus some small industry specific suppliers

Free service, no hidden charges

Full report generated and discussed

Great deals, lower electricity/gas prices and better contracts

We make sure it is all done ethically and legally

Industry experts to negotiate the deal on your behalf

Your time is valuable.
Our advice is free



SUPPLIERS

Mainstream



Gas



Electricity



Client With Utilitrack

With Utilitrack

- 5 Minutes
 - Email a scan or photograph of your latest bill and give us permission to speak to suppliers on your behalf
- 5 Minutes
 - Review our Market Comparison Report
- 5 Minutes
 - Electronically sign a new contract

15 mins!!



Sample Market Report

Utilitrack - Gas Market Comparison Report
Report ID: 00055167, Client ID: 018602 - Forever Entertainment Limited



2 Pricing Summary

2.1 Current

Current Supplier: Opus Energy

Current Cost (£): 24898.23

2.2 Prices Found

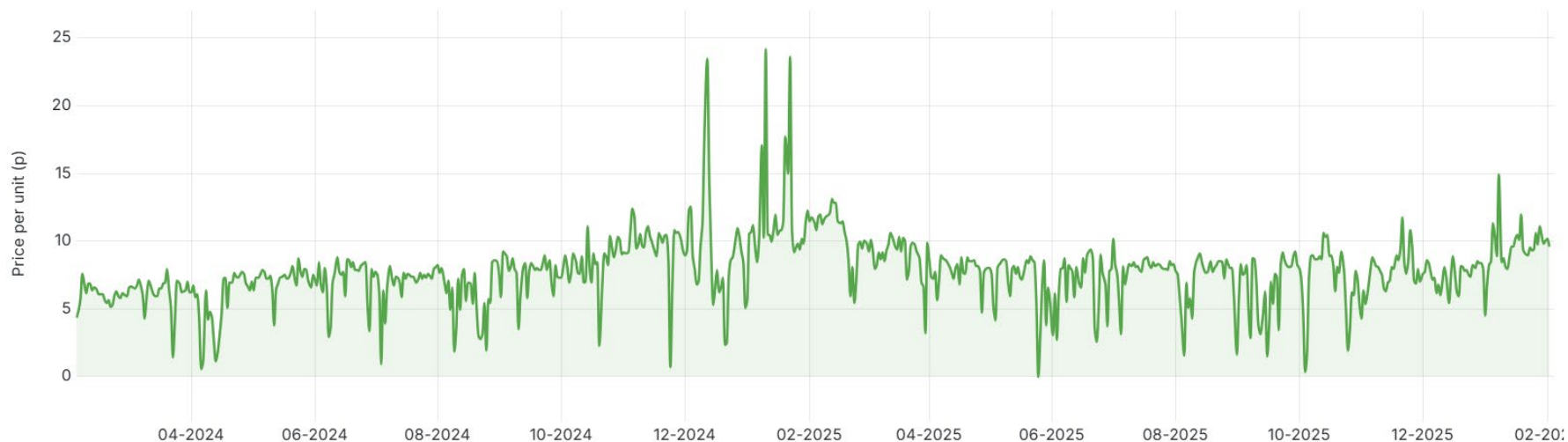
Listed below is a summary of the prices obtained from our search of the market. A list of suppliers who declined to tender (if any) can be found later in this report. Any figures highlighted in green are 100% renewable tariffs.

Option	Supplier	Price Type	Pay Type	Period	Diff (£)	Diff Perc(%)	New Cost(£)	Expires
1	E.ON Next Energy Limited	Other	Direct Debit	36	-15179.21	-60.97	9719.02	Tue 12-Mar-2024 04:00PM
2	E.ON Next Energy Limited	Other	Direct Debit	24	-15163.17	-60.90	9735.06	Tue 12-Mar-2024 04:00PM
3	E.ON Next Energy Limited	Other	Direct Debit	12	-15147.13	-60.84	9751.10	Tue 12-Mar-2024 04:00PM
4	Dyce Energy	Other	Direct Debit	24	-14605.48	-58.66	10292.75	Tue 12-Mar-2024 04:00PM
5	Dyce Energy	Other	Direct Debit	12	-14600.39	-58.64	10297.84	Tue 12-Mar-2024 04:00PM
6	Smartest Energy	Other	Direct Debit	24	-14600.16	-58.64	10298.07	Tue 12-Mar-2024 04:00PM
7	YU Energy	Other	Direct Debit	24	-14590.71	-58.60	10307.52	Tue 12-Mar-2024 04:00PM
8	YU Energy	Other	Direct Debit	36	-14551.49	-58.44	10346.74	Tue 12-Mar-2024 04:00PM
9	Dyce Energy	Other	Direct Debit	36	-14472.73	-58.13	10425.5	Tue 12-Mar-2024 04:00PM
10	Smartest Energy	Other	Direct Debit	12	-14455.78	-58.06	10442.45	Tue 12-Mar-2024 04:00PM
11	Smartest Energy	Other	Direct Debit	36	-14455.78	-58.06	10442.45	Tue 12-Mar-2024 04:00PM
12	YU Energy	Other	Direct Debit	12	-14449.99	-58.04	10448.24	Tue 12-Mar-2024 04:00PM
13	British Gas	Other	Direct Debit	12	-14391.16	-57.80	10507.07	Tue 12-Mar-2024 04:00PM
14	Smartest Energy	Other	Direct Debit	60	-14295.36	-57.42	10602.87	Tue 12-Mar-2024 04:00PM
15	British Gas	Other	Direct Debit	24	-14133.04	-56.76	10765.19	Tue 12-Mar-2024 04:00PM
16	Yorkshire Gas And Power	Other	Direct Debit	12	-13899.16	-55.82	10999.07	Tue 12-Mar-2024 04:00PM
17	British Gas	Other	Direct Debit	36	-13871.01	-55.71	11027.22	Tue 12-Mar-2024 04:00PM

3 Keys To Keep Club Electricity Prices Lowest

1. Never sign or agree to a new energy contract before surveying the current energy market landscape
2. Look at your current supplier's various tariff options, especially the price difference between fixed rate and variable rate contracts
3. Then, get quotes from a broker – that's ME!

Indicative Daily Average Wholesale Price (p/kWh)



How We Have Helped Gloucestershire Cricket Clubs

We have helped 3 clubs so far

- Provided competitive quotes – example of a club in Stroud where we saved over £3,100 on a 3-year contract. Savings could have been as much as £3,600 had they switched suppliers.
- Given advice and guidance
- Helped with meter issues
- Helped with billing issues
- Checked previously signed contracts to give peace of mind

In talks with other counties to see how they can help local clubs

How We Have Helped Gloucestershire Cricket Clubs

Mike Donaldson's, Chair of Frenchay Cricket Club, who we have recently piloted this partnership with:

“The process of dealing with Utilitrack was easy and smooth, Keval was knowledgeable of the products available and listened to our individual needs – not every cricket club is the same! Having sourced the market, Utilitrack were able to find us a new deal offering a £1200 annual saving. As everyone knows, running a cricket club can be a costly business, and finding savings of this magnitude will enable us to keep membership fees low and use the savings to improve our facilities.”

THANK YOU

**Your time is valuable.
Our advice is free**

**Contact Keval Gami
keval.gami@utilitrack.co.uk
07770 461093**

QUESTIONS?

RAISING MONEY & SAVING MONEY



FUNDING BODY	AMOUNT
ECB COUNTY GRANT FUND	MAX £15,000*
ECB INTEREST FREE LOAN (33)	MAX £50,000*
ECB TACKLING CLIMATE CHANGE – COMING SOON	MAX £15,000
ECB STRATEGIC INVESTMENT FUND (HUNDRED – COMING SOON)	VARIOUS
SPORT ENGLAND MOVEMENT FUND – GRANT OR CROWDFUNDING PLEDGE	MAX £15,000
NATIONAL LOTTERY AWARDS FOR ALL	£300 TO £20,000
BIFFA AWARDS SCHEME – RECREATION / COMMUNITY BUILDINGS	£10K TO £75K
SUEZ COMMUNITIES TRUST	£1K TO £50K
ENOVERT COMMUNITY TRUST	£5K TO £50K
GLOUCESTERSHIRE COMMUNITY FOUNDATION	VARIOUS
GLOUCESTERSHIRE PLAYING FIELDS ASSOCIATION	£250 TO £2K – LOANS UP TO £5K
<u>GLOUCESTERSHIRE VCSE ALLIANCE – FUNDING DIRECTORY</u>	VARIOUS
SECTION 106 FUNDING	VARIES
CIL FUNDING	VARIES

SECTION 106 FUNDING

Also known as planning obligations, Section 106 agreements are negotiated contracts between developers and local authorities tailored to address the specific impacts of a particular development. These agreements can require developers to make contributions in various forms, such as financial payments or in-kind provisions, to mitigate the negative effects of their projects.

FUNDING PURPOSE

Supports development broadly, rather than addressing specific impacts of a single project.

CIL FUNDING

Charge imposed by local authorities on new developments, calculated based on a predetermined rate per square meter of new build floor space. It aims to fund a wide range of infrastructure projects to support local community growth. CIL is designed to be transparent and predictable, applying to most types of development.

FUNDING PURPOSE

Focused on mitigating the direct impacts of a specific development, ensuring that the local community's needs are addressed as a result of a new project.

SECTION 106 FUNDING & CIL FUNDING

HOW CAN CRICKET CLUBS BENEFIT

Clubs can obtain funding from both funds, provided the local authority is aware of the club's intended project and supports the justification for it. If the Section 106 agreement makes provision for new or improved recreational/sporting facilities, then the club may stand to benefit.

WHAT CAN CLUBS DO TO MAXIMISE THEIR POTENTIAL FOR SECTION 106 FUNDING?

Engage with your local authority and raise awareness of club needs and priorities via the **PLAYING PITCH STRATEGY**.

Understand your local authorities' process for requesting Section 106 funding

It is not normally a fast-moving process and can take considerable time to come to fruition.

WE CAN HELP YOU!

WE WORK WITH ALL 8 LOCAL AUTHORITIES THAT COVER OUR COUNTY, BUT WITHOUT KNOWING ABOUT YOUR PROJECTS WE CANNOT HELP AND SUPPORT, NOR DIRECT YOU TO OPPORTUNITIES FOR LARGE-SCALE FUNDING

**IMPROVING
LIVES
THROUGH
INSPIRING
FACILITIES**



Gloucestershire
Cricket Foundation

Crowdfunding (plus Matchfunding)



Has anyone been part of a successful Crowdfunding campaign?



Its simple and effective but requires commitment and effort form a small team.

1. Start a crowdfunding campaign and set a target
2. Launch the campaign- ONLY WHEN everything is in place – *rec campaign period is 6 weeks*
3. Promote the campaign far and wide
4. Engage the whole club membership – include "rewards"
5. Reach 25% of target and engage with Sport England Movement Fund for match funding contribution
6. Promote and complete the campaign and achieve target – collect the matchfunding offer
7. WE CAN HELP START YOUR RESEARCH HERE



THANK YOU

Improving lives through the power of cricket

